

STATE

YOUR PASSION.

IllinoisState.edu



ILLINOIS STATE
UNIVERSITY

Illinois' first public university

Learning Trajectories to Support the Development of Measurement Knowledge, pre-K through Middle School

Principal Investigators

Jeffrey E. Barrett and Craig J. Cullen

– Illinois State University

Douglas H. Clements and Julie Sarama

– University of Denver

Work on these projects was supported by the National Science Foundation under Grant No. **DRL DRL-1222944**. The opinions, findings, and conclusions or recommendations expressed in this material are those of the authors and do not necessarily reflect the views of the funding agencies.

Measurement as Multiplicative Comparison

- Motivating number through continuous quantity and comparison

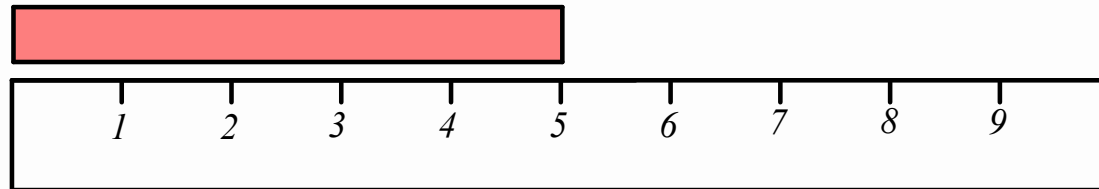


- $B > A$ (Gross comparison)
- B is 2 more “As” (Additive)
- $B = 3A$ or $B/A=3$ (Multiplicative)

– Cite Piaget, Davydov – Barb, Slavin, Carraher,...

Interpreting All Measures as Comparisons?

- When a student reports a length of 5 inches, they need to see this as a multiplicative comparison between the object's length and 1 inch. “This strip is 5 times as long as a 1-inch strip.”

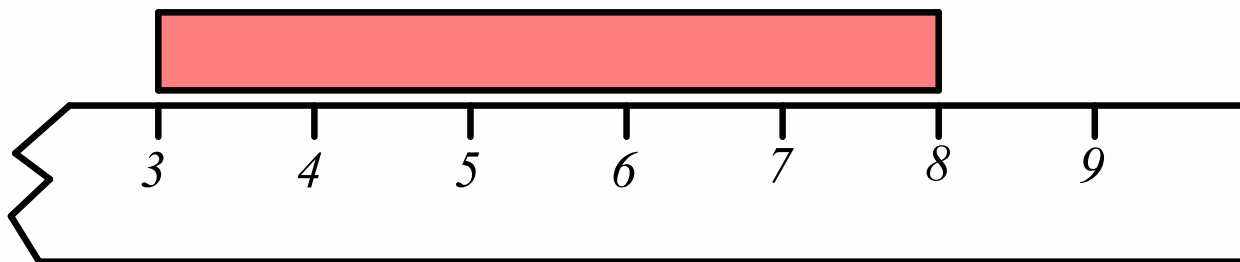


Interpreting All Measures as Comparisons?

- Missing the connection between measure and visual ratio?
 - Broken ruler
 - Triangle area
 - Number of units (area, volume) along an edge length
 - Area of circle (how many r^2 will cover?)

Missing the Connection

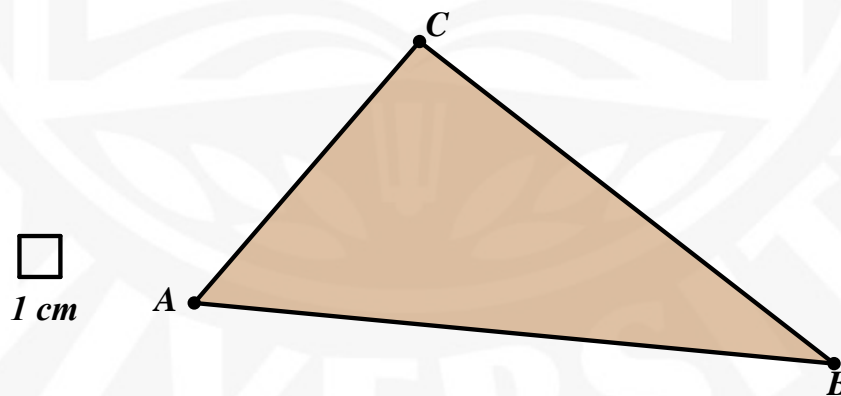
- Broken ruler: This strip is 8 inches long.
 - Does not interpret 8 inches long as being 8 times as long as 1 inch.



Missing the Connection

- Triangle area
 - Find the area of the triangle (54 square cm)
 - How many of these 1-cm squares would fit inside this triangle? (Maybe 32?)

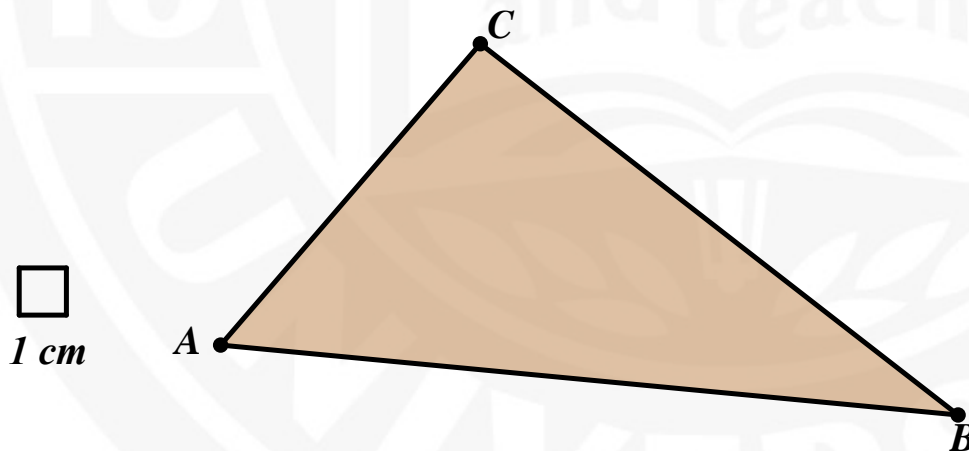
$$\text{Area } \triangle ABC = 54 \text{ cm}^2$$



Missing the Connection

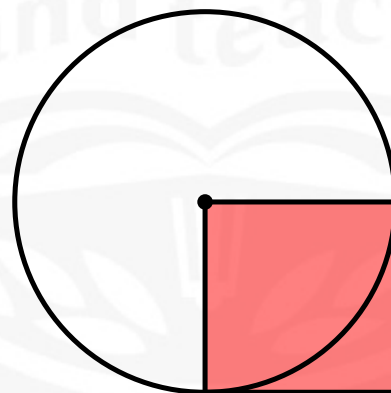
- Number of units (area, volume) along an edge length
 - How many of the square cm will fit along this edge? (Maybe 10 or 11?)

$$m \overline{AB} = 16 \text{ cm}$$



Missing the Connection

- Area of a circle
 - How do you find the area of a circle? ($A = \pi r^2$)
 - How many of these squares could fit inside this circle? (Maybe 3 or 4)



Bridging a Divide

- We see measurement as the intersection between symbolic operations on quantities and spatial comparisons between quantities.
 - We work to help students integrate comparisons (relationships) between quantities expressed symbolically AND spatially.

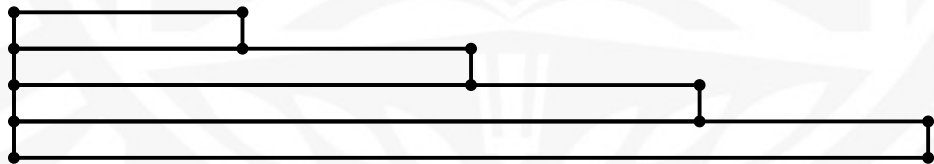
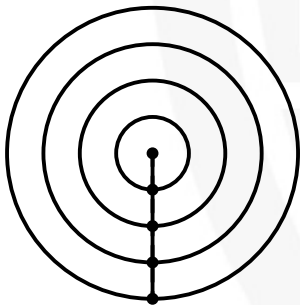
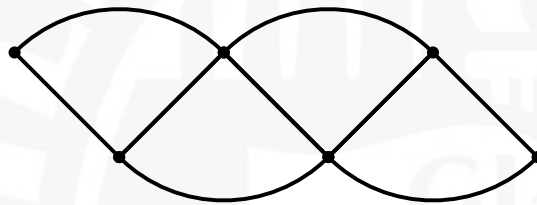
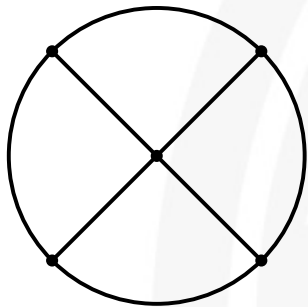
Understanding Area of Circles

- We wanted to examine students' ability to understand the formula $A = \pi r^2$ as a multiplicative comparison between the area of a circle and a square radius.

Understanding Area of Circles

- **Recall** the formula
- **Apply** the formula
- **Interpret** the formula
- **Defend/justify/prove** the formula

Circle Transformations



Affordances of Circle \rightarrow Triangle

- Parallelogram decomposition
 - Circumference cut in half
 - Limit applies curved circumference to straight
 - Limit applies to angles turning into right angles
- Triangle decomposition
 - Circumference remains in one piece
 - Limit applies to “stair steps” to linear
 - The right angle between radius and circumference is immediate

Defend the measure of circle area:

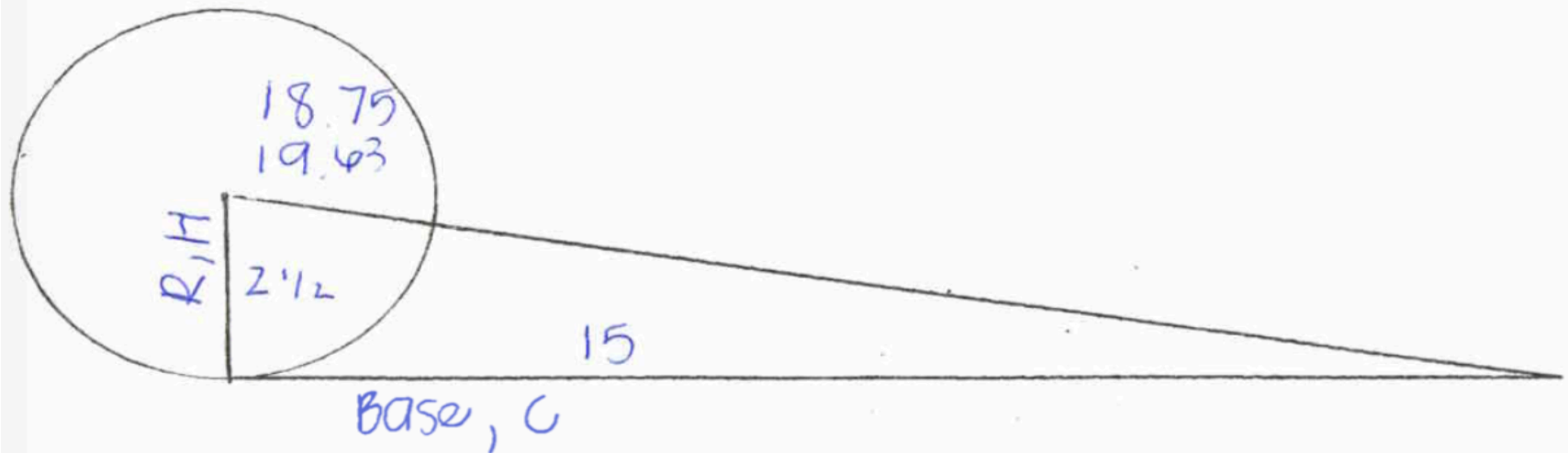
Identify the units of measure to structure the space

- Selected five sessions from our 3 year Teaching Experiment:
 - during Grade 8, November to February;
 - a cohort of four pairs of students.
- Data: Video records and written work from students with field notes.

Findings: recalled formula, stated quantity, yet without identifying units to fill the space

- They could recall and use the expression πr^2 .
- Grasped circle area as a quantity of about 3 square units
- Studied a decomposition from concentric rings of a circle into incremental slats for a triangle:
 - base: circumference and altitude: radius

Relating radius to height, base to C



$VC \div 2 = \text{Area of triangle}$

$VC = \frac{1}{2}$

Conclusions: triangle and circle mutually constituted

- The students said it made sense to them; but what did they conclude from it?
- The decomposition and re-composition was taken as **a valid** way to *relate* a circle to a triangle.

Successes: What did they get out of this?

- Circle → Triangle with same area
 - Area was conserved through a geometric transformation
 - Multiplicative relationship between circumference, radius and area ($A = c * r * 1/2$)
 - $A = 2 \pi r * r * 1/2$
 - How do these expressions relate?
 - Circumference = 2π radius = triangle base
 - Radius of the circle = height of the triangle

Struggles

- $A=c*r*1/2 \rightarrow A=pi*r^2$
- They didn't see the beauty of deriving!
 - (Troubles with algebra – substitution and commuting to see $2*1/2 = 1$)
- Confusion with the fact that “We already knew that!”, to set the *direction* of an argument
- One of the four pairs of students did not like the idea of calling a triangle base “the circumference”.

Did they learn to justify the expression to find the circle area?

- They did not believe they had justified the standard expression for computing circle area.
- The direction of their argumentation was inconsistent with our expectation that they would state a rationale for the circle area formula.

Conclusions

Our findings suggest:

- The activity relating triangle and circle areas provided a supportive basis for linking measurement and multiplication operations.
- This example suggests the students forged a more comprehensive knowledge of both realms, the multiplicative reasoning, and their measurement sense for area.

Implications, questions:

- To what extent can students build a theory of measure for space before they have established multiplicative reasoning, geometric transformations, and algebraic reasoning?
- Measurement tasks in Grades 6-8 mathematics should engage students in finding the foundations and rationale for derived measures as a way of building their own theory of measure (e.g., the area of a circle, or the volume of a rectangular prism, or a parallelepiped)